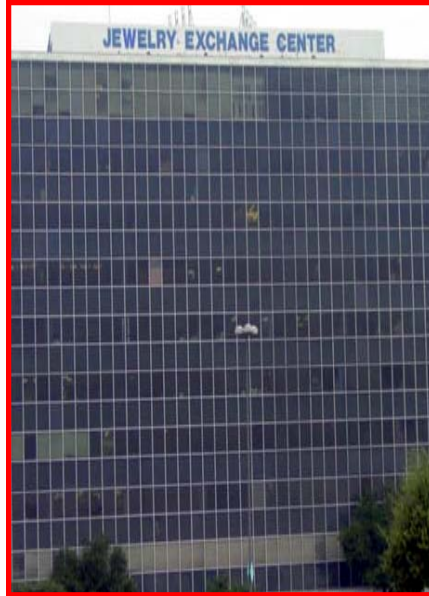


EVANS JEWELRY

***“Specializing in custom, unique Greek
and Masonic Jewelry”***



Kappa Alpha Psi Catalog

Prices Subject to Change without Notice

Sharpstown Mall
Jewelry Exchange Building
7500 Bellaire Blvd. Ste. 430
Houston, Tx 77036
Phone: 713-270-7355
Fax: 713-270-7399
Email: Evansjewelry@pdq.net

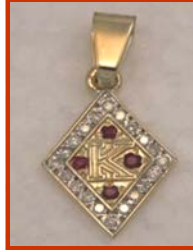
To Order Call: 713.270.7355 or Email Evansjewelry@PDQ.NET



Diamond Drop Charm
Item #: KC-01Dia Full
\$325.00 10k
\$370 14k, \$395 white Gold



Diamond K Charm
Item #: KC-05Dia
\$450.00 10k
\$495 14k, \$525 white Gold



Diamond Ruby K Charm
Item #: KC-05Dia
\$495.00 10k
\$525 14k, \$550 white Gold



Diamond Scroll Charm
Item #: KC-07Dia
\$450.00 10k
\$525 14k, \$550 white Gold



Diamond Crest Charm
Item #: KC-09Dia
\$450.00 10k
\$525 14k, \$550 white Gold



Diamond K Charm
Item #: KC-10Dia
\$450.00 10k
\$525 14k, \$550 white Gold



Phi Nu Pi Charm
Item #: KC-13Dia
\$300.00 10k
\$325 14k, \$345 white Gold



Diamond Symbol Pendant
Item #: KP-01Dia "A"
\$525.00 10k
\$560 14k, \$595 white Gold



Diamond Symbol Pendant
Item #: KP-01Dia Full
\$795.00 10k
\$845 14k, \$875 white Gold



Diamond Symbol Pendant
Item #: KP-01 Semi
\$650.00 10k
\$695 14k, \$725 white Gold



Diamond Symbol Pendant
Item #: KP-04Dia "A"
\$525.00 10k
\$565 14k, \$595 white Gold



Diamond Ruby Symbol Pendant
Item #: KP-04DiaRub "A"
\$515.00 10k
\$560 14k, \$585 white Gold



Diamond Floating K Pendant
Item #: KP-05Dia
\$650.00 10k
\$695 14k, \$725 white Gold



Diamond Floating K Pendant
Item #: KP-05TDia Border
\$725.00 10k
\$760 14k, \$785 white Gold



Diamond Ruby Crest Pendant
Item #: KP-09DiaRub
\$495.00 10k
\$550 14k, \$575 white Gold



Diamond Phi Nu Pi Pendant
Item #: KP-13Dia
\$625.00 10k
\$695 14k, \$725 white Gold



Diamond Signet Ring
Item #: KR-04Dia
\$575.00 10k
\$625 14k, \$645 white Gold

Ruby Signet Ring
Item #: KR-04Dia
\$575.00 10k
\$625 14k, \$645 white Gold

Diamond Symbol Ring
Item #: KR-10Full
\$595.00 10k
\$650 14k, \$695 white Gold

Diamond Symbol Ring
Item #: KR-10Dia "A"
\$475.00 10k
\$550 14k, \$575 white Gold

Diamond Crest Block Ring
Item #: KR-11Dia
\$985.00 10k
\$1175 14k, \$1275 white Gold



Horizontal Symbol Bracelet
Item #: KB-04
\$625.00 10k
\$675 14k, \$725 14kwhite Gold \$235 SS

Diamond Band Ring
Item #: KR-12Dia
\$695.00 10k
\$775 14k, \$825 white Gold

Diamond K Bracelet
Item #: KB-10
\$850.00 10k
\$925 14k, \$950 14kwhite Gold \$235

Specialty Kappa Items



Kappa Mason Pendant
Item #: KMP-05
\$225.00 10k
\$250 14k, \$275 white Gold, \$95 SS

Diamond ID Bracelet
Item #: KB-00SS-14k
\$395.00

Kappa Mason Charm
Item #: KMC-05
\$145.00 10k
\$170 14k, \$195 white Gold, \$45 SS

To Order Call: 713.270.7355 or Email Evansjewelry@PDQ.NET



Drop Symbol Charm
Item #: KC-01
\$55.00 10k \$65 14k
\$75 white Gold, \$30 Sterling



Crest Charm
Item #: KC-02
\$60.00 10k \$70 14k
\$80 white Gold, \$38 Sterling



Small Scroll Charm
Item #: KC-03
\$55.00 10k \$65 14k
\$75 white Gold, \$35 Sterling



Small Diamond Charm
Item #: KC-05
\$65.00 10k \$95 14k
\$110 white Gold, \$35 Sterling



Diamond Scroll Charm
Item #: KC-07
\$195.00 10k \$250 14k
\$275 white Gold, \$50 Sterling



Diamond Crest Charm
Item #: KC-09
\$195.00 10k \$250 14k
\$275 white Gold, \$60 Sterling



Drop Symbol Pendant
Item #: KC-10
\$125.00 10k \$155 14k
\$175 white Gold, \$45 Sterling



Phi Nu Phi Charm
Item #: KC-13-04
\$65.00 10k \$75 14k
\$110 white Gold, \$35 Sterling



Drop Symbol Pendant
Item #: KP-01
\$235.00 10k \$275 14k
\$300 white Gold, \$60 Sterling



Crest Symbol Pendant
Item #: KP-02
\$145.00 10k \$175 14k
\$195 white Gold, \$55 Sterling



Horizontal Symbol Pendant
Item #: KP-04
\$275.00 10k \$295 14k
\$325 white Gold, \$60 Sterling



Diamond Floating Pendant
Item #: KP-05
\$155.00 10k \$195 14k
\$215 white Gold, \$55 Sterling



Symbol Crest Pendant
Item #: KP-06
\$250.00 10k \$275 14k
\$295 white Gold, \$75 Sterling



Symbol Crest Pendant
Item #: KP-09
\$250.00 10k \$325 14k
\$350 white Gold, \$90 Sterling



Nupe Pendant
Item #: KP-11
\$115.00 10k \$150.00 14k
\$165 white Gold, \$50 Sterling



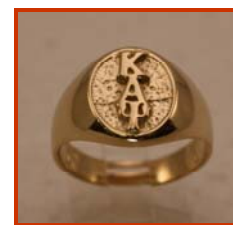
Crest Pendant
Item #: KP-12
\$165.00 10k \$195.00 14k
\$235 white Gold, \$55 Sterling



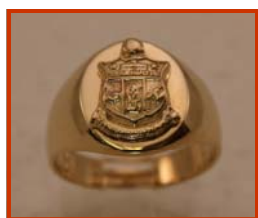
Drop Phi Nu Phi Pendant
Item #: KP-13
\$225.00 10k \$280 14k
\$305 white Gold, \$65 Sterling



Large Floating "K" Pendant
Item #: KP-25
\$495.00 10k \$580 14k
\$625 white Gold, \$145 Sterling



Symbol Signet Ring
Item #: KR-04
\$225.00 10k \$260 14k
\$295 white Gold, \$65 Sterling



Signet Shield Ring
Item #: KR-09
\$295.00 10k \$350 14k
\$375 white Gold, \$110 Sterling



Medium Symbol Ring
Item #: KR-10
\$275.00 10k \$325 14k
\$345 white Gold, \$55 Sterling



Sunburst Crest Ring
Item #: KR-11
\$450.00 10k \$495 14k
\$525 white Gold, \$145 Sterling



Band Ring
Item #: KR-12
\$295.00 10k \$355 14k
\$375 white Gold, \$95 Sterling

Specialty Kappa Items



Large Floating "K" Diamond Cut Pendant
Item #: KP-25
\$495.00 10k \$585 14k
\$625 white Gold, \$145 Sterling

Large Crest Ring w/Stones
Item #: KR-15
\$135.00 10k \$160 14k
\$185 white Gold, \$75 Sterling



Floating Crest Charm
Item #: KC-09
\$195.00 10k \$250 14k
\$275 white Gold, \$60 Sterling



Floating K Charm
Item #: KC-15
\$135.00 10k \$160 14k
\$185 white Gold, \$75 Sterling



Big Drop Pendant
Item #: KP-50
\$495.00 10k \$575 14k
\$625 white Gold, \$125 Sterling



Medium K Pendant
Item #: KP-10
\$295.00 10k \$325 14k
\$350 white Gold, \$95 Sterling



Floating K Cufflinks
 Item #: KCL-10Dia
\$750.00 10k \$875 14k
 \$895 white Gold,



Floating K Cufflinks
 Item #: KCL-10Rub
\$525.00 \$650 14k
 \$675 white Gold



Floating K Cufflinks
 Item #: KCL-10Stn
\$525.00 10k, \$650 14k
 \$675 white Gold, \$195 Sterling Silver



Floating K Cufflinks
 Item #: KCL-10-
\$395.00 10k \$475 14k
 \$495 white Gold, \$135 Sterling



Crest Cufflinks
 Item #: KCL-12
\$335.00 10k \$395 14k
 \$450 white Gold, \$125 Sterling



Crest Cufflinks
 Item #: KCL-12
\$335 10k \$395 14k
 \$450 white Gold \$125 Sterling Silver

Evans Jewelry Order Form

Qty.	Description	Item #	Price	Subtotal

Order total: _____
 (8.25%)Tax: _____
 (Shipping): _____
 Total: _____

Name _____

Address _____

Phone _____

Method of Payment

- Check
- Money Order
- Visa
- MasterCard
- American Express
- Other _____

Credit Card # _____ Exp. date _____

Signature _____